

## EMERGENCY RIDE HOME (ERH)

Up to Four Trips Per Year!



### What is ERH?

Carpooling, vanpooling, riding transit, and biking are economical and sustainable ways to commute to work. However, what happens if you have an emergency, become ill, or have unexpected overtime and cannot make your rideshare arrangements home from work?

Emergency Ride Home (ERH) is a free reimbursement service that assures commuters they won't be stranded at work when the unexpected occurs. You can take up to four rides with any licensed rideshare provider and be reimbursed the full cost of the ride (up to \$200, including tip) after uploading your receipt on the Gohio Commute website. It's a foolproof benefit meant to ease your mind when carpooling, vanpooling, biking or riding the bus to work.

### How does it work?

Commuters must opt-in to the program at [www.gohiocommute.com/morpc](http://www.gohiocommute.com/morpc). Profiles will be reviewed by the Gohio Commute team for eligibility, and you will be notified once enrolled. Then, after you've taken an emergency ride, simply log into your account and redeem a point for reimbursement. The program is valid for up to four emergency rides in a calendar year.

### How do I register for ERH?

To enroll, register for an account at [gohiocommute.com/morpc](http://gohiocommute.com/morpc). On the last page of registration, be sure to check the box that reads "I would like to participate in the Emergency Ride Home Program." Gohio Commute staff will screen your application and contact you within 72 hours, if approved.



### Counties Served:

Delaware	Hocking	Madison	Pickaway
Fairfield	Knox	Marion	Ross
Fayette	Licking	Morrow	Union
Franklin	Logan	Perry	



MORPC does not discriminate on the basis of age, race, color, national origin, gender, sexual orientation, familial status, ancestry, military status, religion or disability in programs, services or in employment. Information on non-discrimination and related MORPC policies and procedures is available at [morpc.org](http://morpc.org).

### Connect with us:



## HAVE QUESTIONS?

Contact the Gohio Commute Team:

☎ 1-888-742-RIDE (7433) ✉ [gohio@morpc.org](mailto:gohio@morpc.org)

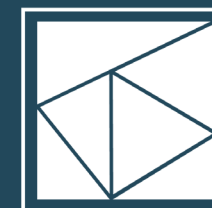
Learn more about MORPC TDM programs at [morpc.ogohio.com](http://morpc.ogohio.com)



To explore your personalized commuting options, scan the QR code or visit: [gohiocommute.com/morpc](http://gohiocommute.com/morpc)



A Smarter Way



MID-OHIO REGIONAL  
**MORPC**  
PLANNING COMMISSION

## Who We Are

Gohio Commute, a program of the Mid-Ohio Regional Planning Commission (MORPC), equips commuters and companies with resources to help them explore cost-effective and environmentally friendly commuting options. The program seeks to reduce roadway congestion and improve air quality throughout Central Ohio.



### Carpool

Reduce stress and save money by carpooling. Gohio Commute will examine your needs and find someone with similar commuting constraints who is interested in sharing the ride to work.



### Transit

Don't get stuck in traffic jams. Explore bus routes within Gohio Commute and turn your time spent commuting into productive activity.



### Bike/Walk

Keep your heart healthy by biking or walking to work. Gohio Commute provides information about local biking and walking routes and helps form bikepools. Gohio Commute makes it easy to find other to bike to work together.



### Vanpool

A Gohio Commute vanpool is a group of 5 to 15 commuters who commute to work on a regular basis in a commuter van. One person volunteers to be the team leader/coordinator, and everyone shares driving responsibilities. The monthly cost of the vanpool package is split amongst the commuters. The vanpool group determines their daily route. Riders meet at a designated pickup location, such as a shopping center or park & ride.



## Is Vanpooling right for me?

- Drive 30+ minutes or travel 20+ miles one way to work.
- Maintain a consistent work schedule.
- Live and work along the same route as 6 to 15 other people who also want to vanpool.

## What are the benefits?

- Save hundreds of dollars on commuting costs.
- MORPC provides a monthly vanpool subsidy to qualified vanpools.
- Reduce wear and tear on personal vehicles.
- Reliable, safe and comfortable transportation.
- Escape the daily grind and stress of traffic congestion.
- Turn commuting time into productive time to read, surf the web, catch up on work, or sleep.
- Make new friends with fellow van riders.

## How do we start?

Contact us at 1-888-742-RIDE and we'll work to place you in an existing vanpool or form a new vanpool. When forming a new vanpool, Gohio Commute staff will assist with all formation steps leading to van delivery.



## Benefits of a smarter commute



Cost-Effective



Productivity



Healthy



Community-Oriented



Environmentally Friendly



## Employer Services

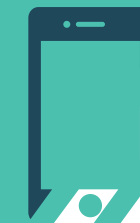
Gohio Gohio Commute offers free assistance solving workforce transportation issues. Allow our team to diagnose your unique transportation challenges and implement a free Transportation Demand Management program at your workplace. To request assistance, visit [morpc.gohio.com/workplace](https://morpc.gohio.com/workplace).

## Commuter Services

Within the Gohio Commute website, users can explore their unique commuting options, research the holistic impacts of their travel method, find a rideshare partner, sign up for incentive programs, or register for Emergency Ride Home (ERH).



For more information about Gohio Commute, visit [morpc.gohio.com](https://morpc.gohio.com) or call 1-888-742-RIDE.



The Gohio Commute website is mobile-friendly. Be sure to bookmark it as one of your favorite pages.